



GRILL CABIN 25



PRODUCT DESCRIPTION

Grill Cabin 25 m² invites you to pleasantly spend your weekends, celebrate holidays with a large group of friends, organize events or get-togethers of your relatives. It will easily fit about thirty people.

Huge space, delicious grill steaks and fire heat will create the best mood for smaller or bigger celebrations.

High-quality materials ensure the longevity of a grill house and easy use. Eight cabin walls are made of rounded spruce boards with the dimensions 45 x 145 mm.

The roof is covered with bitumen shingles (different colors can be selected), and there are four double glazed windows, two of which open. Besides that, doors are decorated with an original hexagonal window.

Also, there are seven benches in the cabin; two of these benches easily transform into sleeping benches: just turn over the additional board. Floor is easily assembled from separate components.

There is a convenient wood- or charcoal-fired grill with a table around it inside the cabin. Also, one adjustable cooking platform and two special platforms for a kettle, frying pan, etc. can be found.

Above the grill there is an adjustable chimney. Finally, the cabin is lockable, and there is a small porch with a roof at the entrance.



SPECIFICATION

People	25-30 persons
Timber	Spruce
Shape	Octagonal
Room	1
Inside area	25.0 m ²
Total height	4566 mm
Wall height	1155 mm
Floor thickness	18 mm
Roof thickness	18 mm
Wall thickness	45 mm
External dimension	5450 x 5450 mm
Door size	782 x 1760 mm
Window size	880 x 510 mm

STANDARD SET

Wall, floor, roof panels from spruce;

Roof covered with bitumen shingles of your selected color;

Inside standard grill with cooking platforms;

Table around the grill;

Adjustable chimney;

4 double glass windows (2 of them are opening);

Door with a lock and hexagon window;

7 inside benches from spruce (2 of them are folding benches);

Cushions for benches of your selected color: brown or blue.

GRILL AND CHIMNEY SET



"Premium" 8-corner Grill and Chimney set



"Viking Premium" Grill and Chimney



"Viking" Grill and Chimney



Standard 8-corner Grill and Chimney



Luxury Grill and Chimney



Without Grill and Chimney

OPTIONS

AVAILABLE ROOF COLOR



Black shingles



Green shingles



Red shingles

BENCHES AND CUSHIONS:

- Benches + brown cushions;
- Benches + blue cushions;
- Without cushions;
- Without benches and cushions.



OPENING WINDOWS FOR GRILL CABIN 25

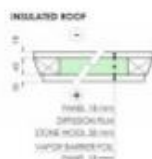
- 2 opening windows from 4 (standard);
- 3 opening windows from 4;
- 4 opening windows from 4.



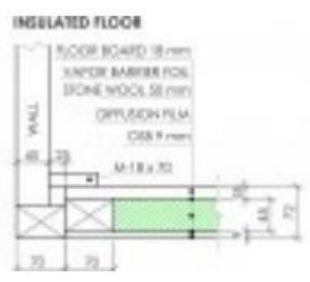
WALLS HEIGHT

- One extra board in wall (*the height of board - 145 mm*)
- Two extra boards in wall

INSULATED ROOF



INSULATED FLOOR



TONGUE AND GROOVE FLOORS (28 MM)



ACCESSORIES



Blue curtains set



Brown curtains set



Drawer



Shelf for Grill cabin



Firewood ring



Grill Chimney Extension



Grill cover 8 corners



Grill table safety fence 8 corners*



Reindeer hides



Wooden dishes and flatware set**



Stainless steel door sill



Door stopper

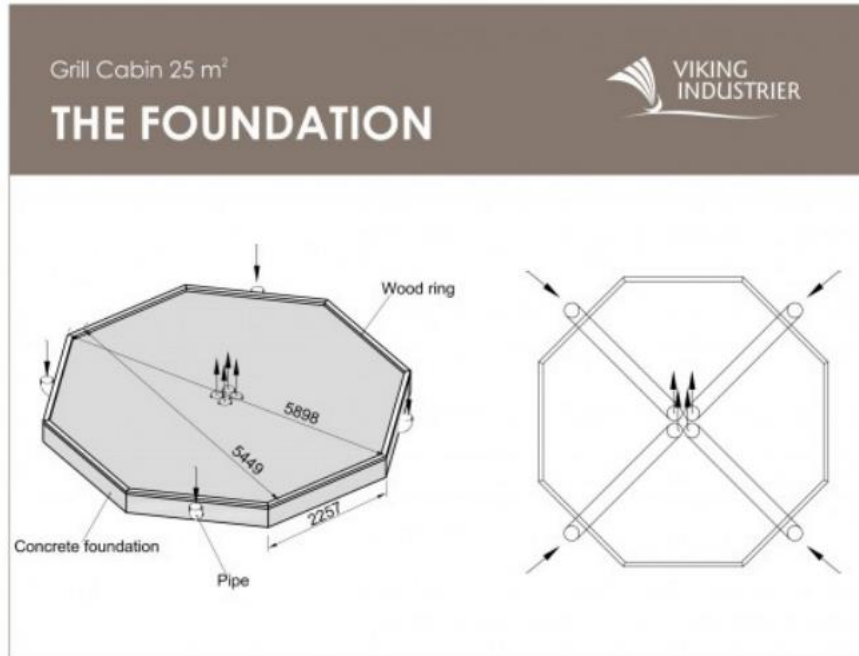


Table And Benches set for 25 m2 Cabins

* Only for Standard 8-corner grill and chimney set

**Available "Basic", "Optimal" or "Luxury" set.

FOUNDATION



It is very important to have a proper base for your Grill Cabin. Therefore, we recommend following our sketches and consulting a qualified local builder or engineer. Making sure that the base for your product fits the location is of utmost importance.

Due to an improper base, the structure may crack. If the product is unevenly seated, the geometric shape of the building may change, which can result in the door/windows twisting, and/or gaps. In the worst-case scenario, the product may even collapse.

- Before building the base, make sure you take into account the landscape and the ground conditions on which the product will stand.
- The base under the product must be prepared specifically for the product.
- The base must be homogeneous, tight, and level.
- Make sure that the properties of the base do not change over time. We recommend making the base out of concrete and water-proofing it before installation.

If you do not follow recommendations for building the base, the product will lose its warranty!

PAINTING

AUTOMATIC MACHINE SPRAY TECHNOLOGY

Benefits

One of the main and most obvious benefits of using a paint machine is the speed and flexibility at which we can suggest our painting service for all of our products. A spray paint machine can get the work done faster and more consistently than manually painting. While the machine works faster, it improves quality too – sprayers produce an even coat of paint, leaving a high-quality finish.

With our painting service from now, we can suggest to our client maximum flexibility! Not assembled products such as Grill cabins, Pavilions, Camping pods, and other products of any size you can order painted too!

PROFESSIONAL SPRAY

The high-quality preservative finish is professionally spray applied in the factory to three sides of the wood. The product is treated in your choice of color. You can choose two colors for one product: one for almost all product details and another for finishing details.

STAIN | PAINT

Which type of paint should I Use?

Properly painting and impregnating is one of the most important things to consider when thinking about how to extend your product's lifetime.

Paint and natural wood finish instantly spruce up the aesthetics of your product.

The decision you will need to make is if you want to use a water-based wood stain or paint. Both will offer you UV protection. The wood stains will allow the texture of the wood to show through and many are now available in a vast range of colors, however, paints will give you an intensive color, but will cover the grain and texture of the wood.