



GRILL CABIN 16.5 M² WITH EXTENSION



PRODUCT DESCRIPTION

This large and spacious Grill Cabin 16.5 m² with extension allows organizing various events such as family or friends get-togethers, children parties, delicious food tastings, or bath in a sauna. There is enough space for a large crowd of people, and the different sizes of extensions can be used for different purposes. The major advantage of this grill cabin is that an event will not be spoiled by bad weather conditions. You can rest or celebrate at any time of the year.

Ensure that our modular cabin can meet your needs and wants we suggest to choose the extension from 4 different sizes and types! If you need some extra space you can add an extension of sizes:

- **3 m² extension (standard size);**
- 4.3 m² extension (optionally);
- 4.3 m² extension with sauna room (optionally);
- 5.2 m² extension (optionally).

Grill Cabin walls are made of rounded spruce boards with the dimensions 45 x 145 mm.

The roof is covered with bitumen shingles, there are five double glazed windows, three of which open, 3 benches in a sauna room and six benches in the cabin; two of these benches easily transform into holding benches: just turn over the additional board. Floor is easily assembled from separate components.

There is a convenient wood- or charcoal-fired grill with a table around it inside the cabin.

Also one adjustable cooking platform and two special platforms for a kettle, frying pan, etc. can be found. Above the grill there is an adjustable chimney.

Finally, the cabin is lockable, and there is a small porch with a roof at the entrance.



SPECIFICATION

People	15-25 persons
Timber	Spruce
Shape	Octagon + Rectangle
Room	2
Inside area	19.4 m ²
Total height	3446 mm
Wall height	1155 mm
Floor thickness	18 mm
Roof thickness	18 mm
Wall thickness	45 mm
External dimension	4539 x 7539 mm
Door size	782 x 1630 mm
Window size	875 x 510 mm

STANDARD SET

Wall, floor, roof panels from spruce;

Roof covered with bitumen shingles of your selected color;

5 double glass windows (3 of them are opening);

Door with a lock and a hexagon window;

Inside standard grill with cooking platforms;

Table around the grill;

Adjustable chimney;

6 grill room benches (2 of them are folding benches);

Cushions for benches of your selected color;

Standard extension's size 1.83 x 1.70 m.

GRILL AND CHIMNEY SET



"Premium" 8-corner Grill and Chimney set



"Viking Premium" Grill and Chimney



"Viking" Grill and Chimney



Standard 8-corner Grill and Chimney



Luxury Grill and Chimney



Without Grill and Chimney

HEATER AND CHIMNEY KIT



Electric heater Harvia "Club",
13.5 kw + Harvia Xenio CX170
(11-20 m3)



Electric heater Harvia Globe
GL110E, 10.5kw + Harvia
Xenio CX170 (9-15m3)



Electric heater Harvia Leged
PO11, 11kW + Harvia Xenio
CX170 (9-20m3)



Electric Heater Harvia Leged
PO165, 16.5kW + Harvia Xenio
CX170 (16-35 m3)



Electric heater Harvia Trendi
KIP90, 9 kw (8 -14 m3)



Electric heater Harvia Vega
BC80, 8 kW (7-12 m3)



Harvia Cilindro PC90XE, 9kW +
Harvia Xenio CX001 (8-14m3)



Wood burning heater Harvia
26 Pro, 26.6 kw (10 - 26 m3)



Wood burning heater Harvia
M3 SL (outside feeding), 16.5
kw (6-13 m3)



Wood burning heater Harvia
M3, 16.5 kw (6-13 m3)



Wood burning heater Harvia
Pro 20, 24 kw (8-20 m3)



Wood burning heater Harvia
SL 20 (outside feeding), 24.1
kw (8-20 m3)

OPTIONS

AVAILABLE ROOF COLOR



Black shingles



Green shingles



Red shingles

WALLS HEIGHT

- One extra board in wall (*the height of board - 145 mm*)
- Two extra boards in wall

BENCHES AND CUSHIONS:

- Benches + brown cushions;
- Benches + blue cushions;
- Without cushions;
- Without benches and cushions.

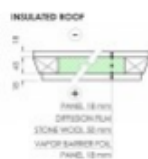


5 DOUBLE GLASS WINDOWS (3 OF THEM ARE OPENING)

- 3 opening windows from 5. 4 windows in grill cabin, 1 - in extension (standard);
- 4 opening windows from 5;
- 5 opening windows from 5.

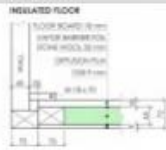


INSULATED ROOF



INSULATED FLOOR

INSULATED FLOOR



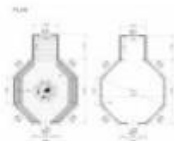
TONGUE AND GROOVE FLOORS (28 MM)



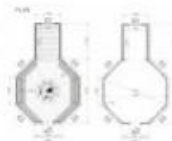
GRILL CABIN 16.5 M² AVAILABLE EXTENSIONS

Ensure that our modular cabin can meet your needs and wants we suggest to choose the extension from 4 different sizes and types!

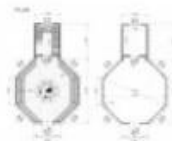
- Empty of size 1830 x 1700 mm (**3 m²**). *Standard size.*
- Empty of size 1830 x 2500 mm (**4.3 m²**). *Optionally.*
- With sauna room of size 1830 x 2500 mm (**4.3 m²**). *Optionally.*
- Empty of size 1830 x 3000 mm (**5.2 m²**). *Optionally.*



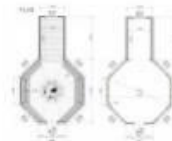
Standard size 3 m²



Size 4.3 m²



Size 4.3 m² with
Sauna room



Size 5.2 m²

ACCESSORIES



Blue curtains set



Brown curtains set



Drawer



Shelf for Grill cabin



Grill cover 8 corners



Grill table safety fence 8 corners*



Firewood ring



Grill Chimney Extension



Reindeer hides



Wooden dishes and flatware set**



Stainless steel door sill



Door stopper



Flower pot for Pavilion and Grill



Head Rest



Clothes Hanger

ACCESSORIES



Sauna Light



Sauna Light Cover



Water Tank For Woodburning Heaters



Thermometer - Hydrometer



Heater Safety Fence for Electric Heaters



Heater Safety Fence for Woodburning Heaters



Wooden Bucket



Wooden Ladle

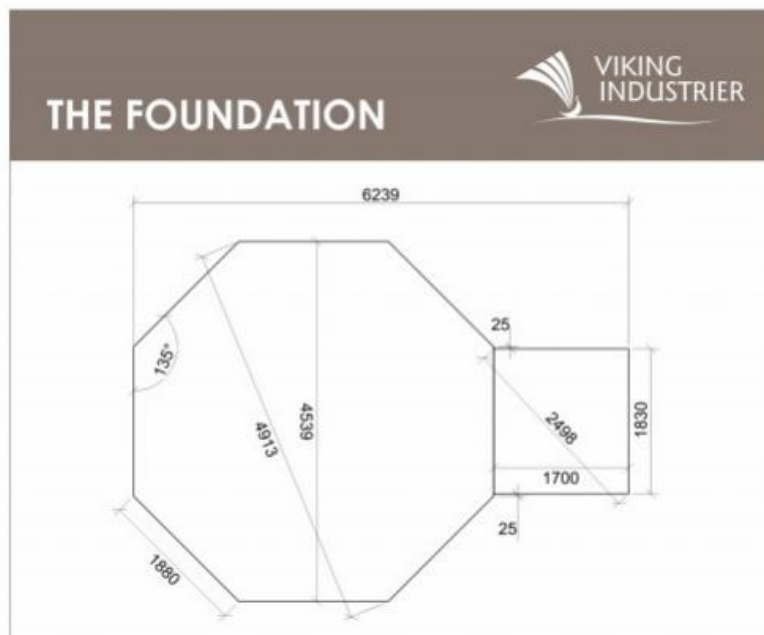


Bucket + Ladle Duo White

* Only for Standard 8-corner grill and chimney set

**Available "Basic", "Optimal" or "Luxury" set.

FOUNDATION



It is very important to have a proper base for your Grill Cabin. Therefore, we recommend following our sketches and consulting a qualified local builder or engineer. Making sure that the base for your product fits the location is of utmost importance.

Due to an improper base, the structure may crack. If the product is unevenly seated, the geometric shape of the building may change, which can result in the door/windows twisting, and/or gaps. In the worst-case scenario, the product may even collapse.

- Before building the base, make sure you take into account the landscape and the ground conditions on which the product will stand.
- The base under the product must be prepared specifically for the product.
- The base must be homogeneous, tight, and level.
- Make sure that the properties of the base do not change over time. We recommend making the base out of concrete and water-proofing it before installation.

If you do not follow recommendations for building the base, the product will lose its warranty!

PAINTING

AUTOMATIC MACHINE SPRAY TECHNOLOGY

Benefits

One of the main and most obvious benefits of using a paint machine is the speed and flexibility at which we can suggest our painting service for all of our products. A spray paint machine can get the work done faster and more consistently than manually painting. While the machine works faster, it improves quality too – sprayers produce an even coat of paint, leaving a high-quality finish.

With our painting service from now, we can suggest to our client maximum flexibility! Not assembled products such as Grill cabins, Pavilions, Camping pods, and other products of any size you can order painted too!

PROFESSIONAL SPRAY

The high-quality preservative finish is professionally spray applied in the factory to three sides of the wood. The product is treated in your choice of color. You can choose two colors for one product: one for almost all product details and another for finishing details.

STAIN | PAINT

Which type of paint should I Use?

Properly painting and impregnating is one of the most important things to consider when thinking about how to extend your product's lifetime.

Paint and natural wood finish instantly spruce up the aesthetics of your product.

The decision you will need to make is if you want to use a water-based wood stain or paint. Both will offer you UV protection. The wood stains will allow the texture of the wood to show through and many are now available in a vast range of colors, however, paints will give you an intensive color, but will cover the grain and texture of the wood.

USAGE.

- **The first time you'll use your Grill the surfaces of the new product that are in direct contact with the flames may create a smoky smell when heating up.** We advise to keep the door open during the first use and not to cook until the smell disappears.
- When burning wood we recommend use a Grill table metal safety fence.
- We suggest you use only firewood or briquettes. Larger burning objects can be added later when the fire is burning well. We advise using objects no larger than 300 mm.
- A sufficient flow of fresh air is the most essential aspect of smoke exhaustion. At least as much fresh air should come in as goes out with the smoke.
- If the Grill is generating a lot of smoke, open the door of the Grill Cabin and make sure that the wood is dry and without a bark. Put in additional dry wood if needed.
- Keep decorations away from your Grill. Hanging decorations look pretty, but provide fuel for a fire.
- Keep water nearby for flare-ups.
- **Keep a fire extinguisher within a couple of steps of your Grill.** And KNOW HOW TO USE IT!
- **Don't leave a grill unattended.** Don't allow kids or pets to play near the Grill. Never try to move the hot Grill, and remember the Grill will stay hot for at least an hour after its use.
- Do not sleep in a Grill Cabin when the fire is on!
- Use protective gloves when handling hot cooking plates. **Never move or service an operating Grill.**
- Please note, that the metal Grill may have sharp edges and the steel parts of the grill heat up when the fire is burning, therefore there is a risk to harm or burn yourself.
- Remove ashes from the Grill after they have cooled down.
- Make sure you give yourself time to clean your grill after each use in order to ensure maximum hygiene and proper functioning.

MAINTENANCE.

You should not forget that wood is a natural material, it changes and moves depending on weather conditions. Large and small cracks, color tone differences and other changes, as well as a changing structure of wood are not defects, but a result of wood growing and a feature of wood as a natural material. Natural wood (not impregnated) becomes greyish after being left untouched for a while and can turn blue and become mouldy. You should immediately process it with a wood preservative to protect the wooden parts of our manufactured products.

We definitely recommend that you process the door and windows with a wood preservative, and do it on both sides (inside and outside), because the doors and windows can deform. Also, you should pre-treat the floor panels with a wood preservative, especially the bottom sides of the panels, to which you will no longer have access when the Cabin is assembled. Only this will prevent moisture penetration.

In general, we recommend for the conclusive finishing a weather protection paint that will protect the wood from moisture and UV radiation after the Cabin is assembled. Consult a specialist regarding paints suitable for unprocessed softwood and follow the paint manufacturer's instructions. Your Grill Cabin service life will be much longer after it will be properly painted. **We recommend that you inspect your Cabin thoroughly once every six months.**

The customer should make sure that air circulation is working in winter as well. It means that air pipes are open all year round and that moisture gets out from the product (through the chimney). The customer should also make sure that the product's roof is not covered by snow. A layer of snow cannot be thicker than 20 cm on the roof and the flue should never be covered by snow or closed manually.

Leiktæki & Sport ehf Austurmörk 19 - 810 Hveragerði sími 8650077 - Lts@Lts.is

www.Leiktæki.is